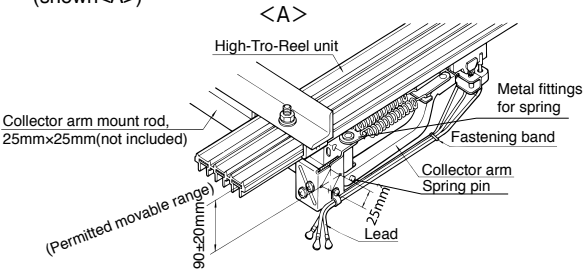


**10 Collector arm installation** Please refer **3** even to page 21 for the CE type.

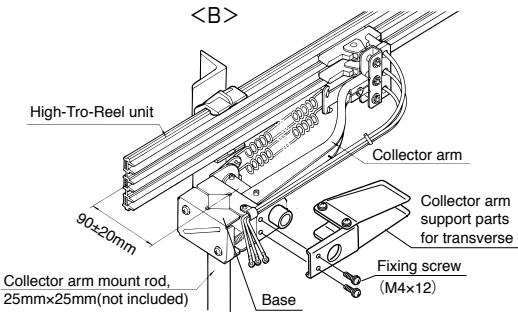
**Standard installation**

Set the distance between the High-Tro-Reel conductor sliding surface and collector arm mount rod to 90mm (Central value of the collector arm permitted movable range  $90\pm20$ mm).  
(Set the distance to 90mm at the hanger bracket section.)  
(shown<A>)



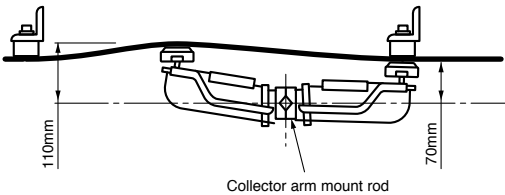
**Horizontal installation with its opening facing**

As shown in a figure, mounted collector arm support parts for transverse on base of the collector arm. Tightening torque of fixing screws :  $0.98\text{ N} \cdot \text{m} \sim 1.32\text{ N} \cdot \text{m}$   
Set the distance between the High-Tro-Reel conductor sliding surface and collector arm mount rod to 90mm (Central value of the collector arm permitted movable range  $90\pm20$ mm). (shown<B>)

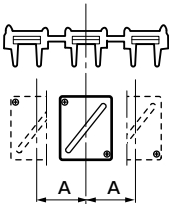


**Use range of movable**

When collector arm mount rod set up a reference position, the operating range from 70mm ~ 110mm of collector arm set up to be twisting.  
Adjust the arm mount rod between the High-Tro-Reel unit to become 110mm or less and 70mm or more at the center between hangers, and 70mm or more at the bracket.



Distance to the center of the collector arm from the center of the duct

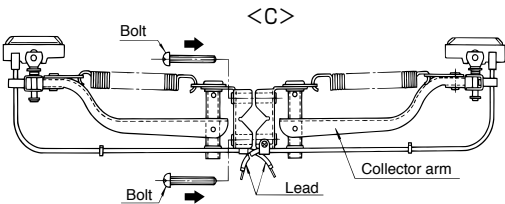


Dimension A of permitted movable range  
Distance to the center of the collector arm from the center of the duct

Not use the horizontal support parts	15mm
Use the horizontal support parts	5mm

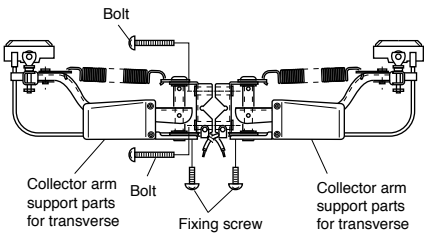
**Assembly in tandem configuration**

Two collector arms (tandem type) should be used together in lines with a circuit of 100A or higher, and especially in applications in which it is imperative that collector arms not be separated from wires. (shown<C>)



**Horizontal installation with its opening facing into tandem-type**

Mounting the horizontal support parts in both the collector arms

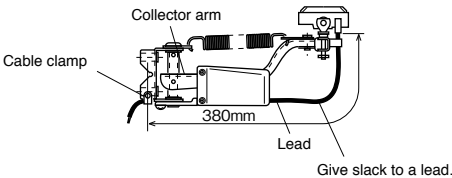


**Caution**

- During operation of equipment, use the collector arm within permitted movable range  $90\pm20$ mm.
- Be sure that collector arms are permitted movable range to the High-Tro-Reel unit with no twisting.
- Be sure to confirm the High-Tro-Reel unit phase (R.S.T) before connecting the leads to the load.
- In case of horizontal installation, be sure to use the Collector arm support parts (for transverse) with its opening facing side. Otherwise, poor collector arm contact or separation from wires may occur.
- Mount the length from the center of the duct to the center of the collector arm within A size.

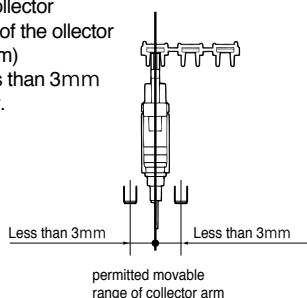
**Wire clamp**

Give slack to a lead. (Lead is a fixed position, 380mm from the base of collector)  
Do not affect a collector's run.



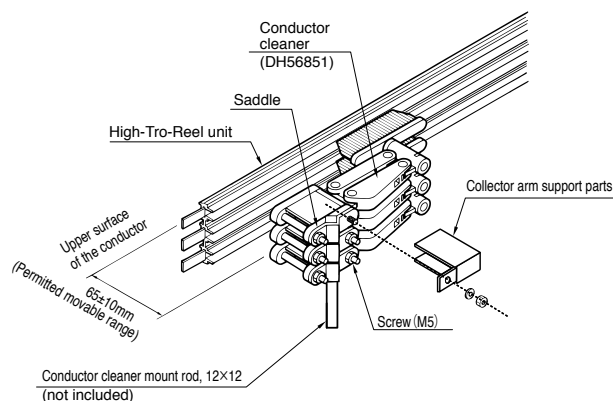
## 11 Mounting a conductor cleaner

1. Mount the supporting parts of collector arm on saddle
2. Set the distance from the upper surface of the High-Tro-Reel conductor to the center of collector cleaner mount rod to 65mm (Central value of the collector cleaner permitted movable range  $65 \pm 10$  mm)
3. Mount the center of collector cleaner to less than 3mm from center of the High-Tro-Reel conductor.



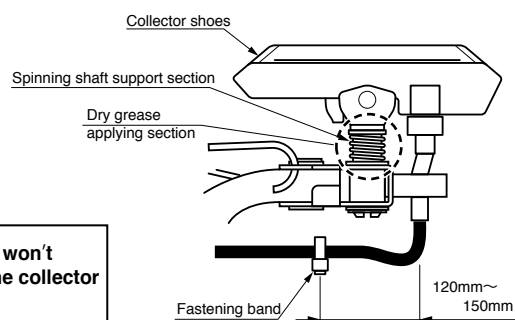
### Notes

- Be sure that the conductor cleaner is mounted parallel to the High-Tro-Reel unit with no twisting.



## 12 Inspection of spinning shaft support parts

- If vertical movement of the collector shoes is not smooth, remove chips adhering on the surface of the spinning shaft support section. Then apply commercially available dry grease 3 to 4 times (Recommended: Japan Dry Slide Company's product No.M10/40). After that, slide the collector shoes (spinning shaft support section) vertically for several times so that the dry grease is evenly applied on the surface of the spinning shaft support section.



### Caution

- Please pay attention so that the dry grease won't adhere on the surfaces of conductor and the collector shoes of the High-Tro-Reel unit. Otherwise, poor contact may occur.
- After applying the dry grease, be sure to do a pre-use test run. Otherwise, electric shock or fire may occur.
- For the inspection for sliding of collector shoes, perform periodic inspection leaving about 3 to 6 months intervals, though it slightly varies depending on the operating condition or environment. If the collector is vertical movement is not smooth, separation of lines or abnormal wear of collector shoes may occur.

• Please inquire Nippon Dry Slide Co., Ltd.  
+81-072-257-2221.

## 13 Collector shoe replacement

Please refer 11 even to page 20 for the CE type.

- The replacement indication line is marked to collector shoes. Collector shoes should be replaced when they wear down a part at least to the replacement indication line. In case of wearing down to the replacement indication line at next inspection, please replace earlier than usual. After replacing the collector shoes, fasten the leads with fastening band (supplied with the collector shoes).

